

Thermoplastic Walkway • Dock • Beam



ValuWalk™ and ValuDock™ - 2' x 4' professionally engineered walkway/dock modules.

ValuBeam™ - 12' x 1' x 4" professionally engineered composite truss beam.

ValuWalk™ - Ideal for indoor/outdoor walkways such as boardwalks, beach access walkways, decks, industrial catwalks, etc.

ValuDock™ - Ideal for marinas and docks, allowing 27% light to pass through to the marine habitat.

ValuBeam™ - Used in conjunction with ValuWalk™ and ValuDock™ installations.

New Green Technology – Uses ThermoPlastic FlowForming™ (TPF) Technology. No VOCs generated during the manufacturing process. Low energy usage for production. 0% waste stream. Uses recycled resins.



ValuWalk™ and ValuDock™ Include:

- 5" deep ribbed structure underneath to eliminate the need for expensive stringers
- Fast and simple to install and remove
- Anti-slip characteristics
- Integrated uniform color throughout

ValuBeam™ Includes:

- Vertical ribbing on the sides for strength
- Segmented to permit cutting at one-foot intervals
- 12' length reduces the number of pilings needed

All products offer a low-maintenance, corrosion-free alternative to traditional materials

Materials:

- ValuWalk™ and ValuDock™ - high molecular weight polyethylene with UV stabilization and color pigment
- ValuBeam™ - polypropylene and glass

Shipping Information:

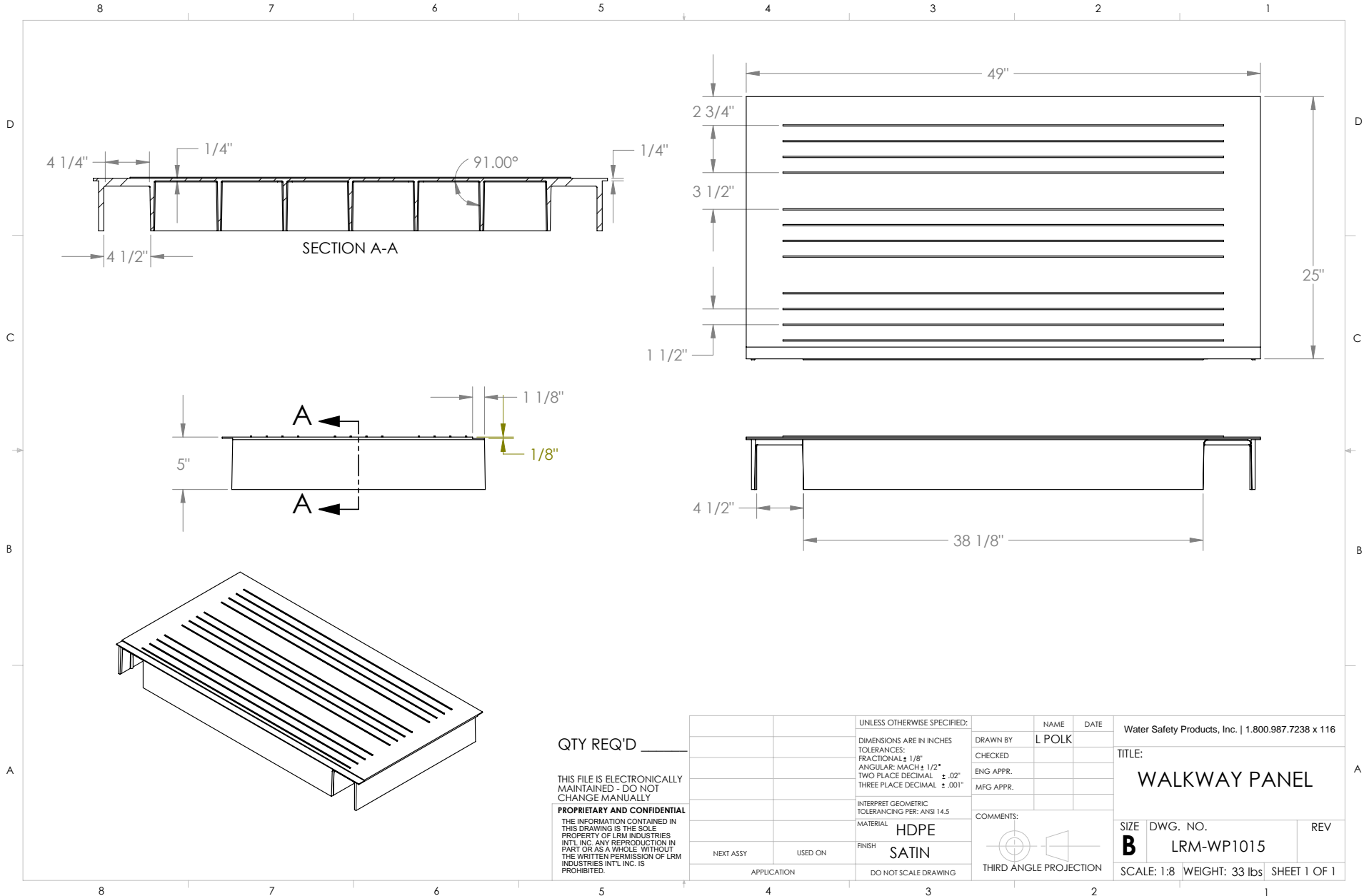
- ValuWalk™ and ValuDock™ modules are 2' x 4' and weigh 35 lbs.
- ValuBeam™ is 12' x 4" and weighs 78 lbs.
- Shipping by container or truck • FOB Rockledge, Florida



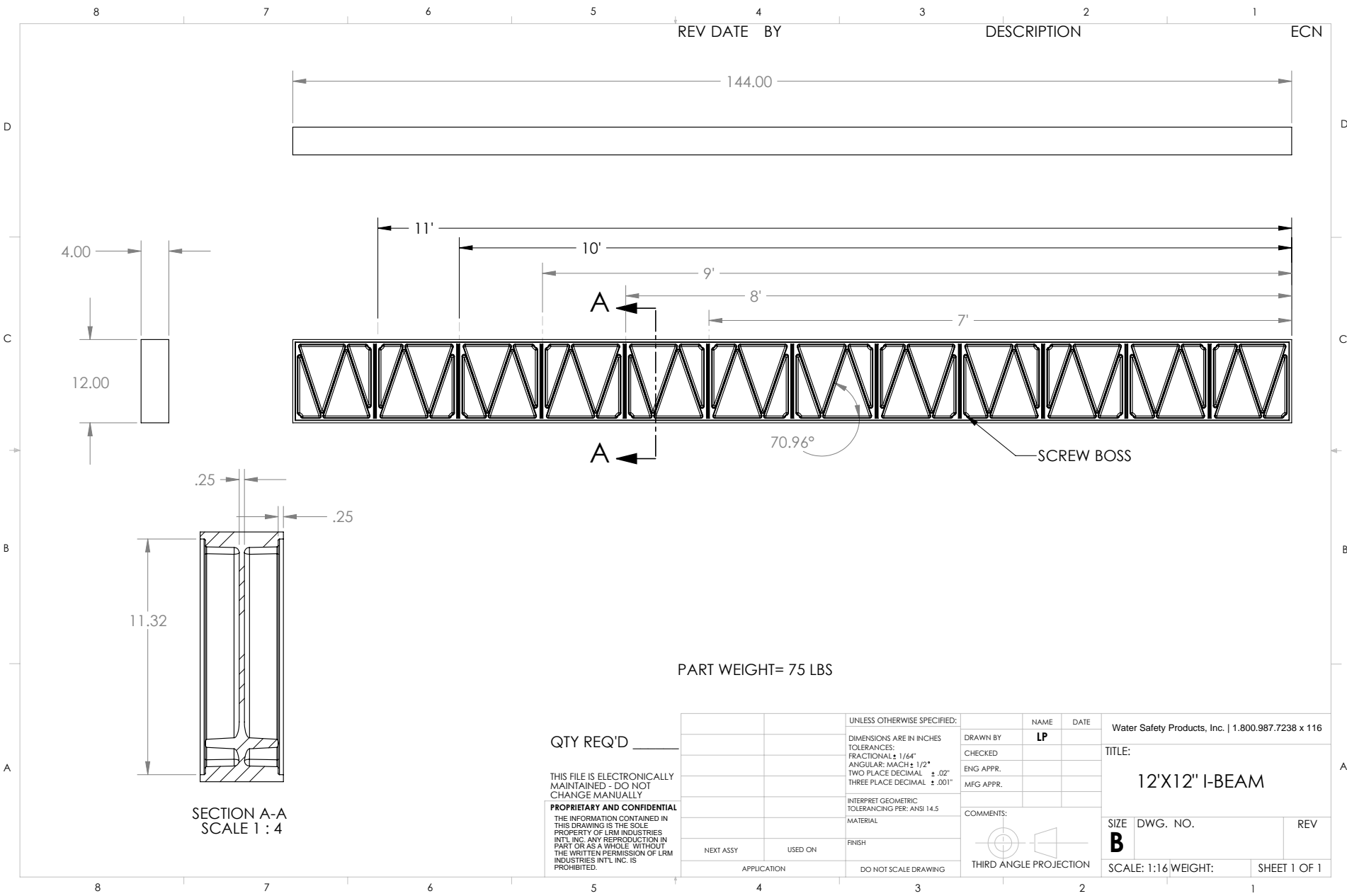
Paula Panton
321-777-7051 X116
paula@watersafety.com

Visit us online: www.WaterSafety.com

Thermoplastic Decking



Thermoplastic Truss



QTY REQ'D

THIS FILE IS ELECTRONICALLY MAINTAINED - DO NOT CHANGE MANUALLY.
PROPRIETARY AND CONFIDENTIAL
 THE INFORMATION CONTAINED IN THIS DRAWING IS THE SOLE PROPERTY OF LRM INDUSTRIES INTL. INC. ANY REPRODUCTION IN PART OR AS A WHOLE WITHOUT THE WRITTEN PERMISSION OF LRM INDUSTRIES INTL. INC. IS PROHIBITED.

UNLESS OTHERWISE SPECIFIED:
 DIMENSIONS ARE IN INCHES
 TOLERANCES:
 FRACTIONAL: 1/64"
 ANGULAR: MACH ± 1/2°
 TWO PLACE DECIMAL ± .02"
 THREE PLACE DECIMAL ± .001"
 INTERPRET GEOMETRIC TOLERANCING PER: ANSI 14.5
 MATERIAL
 FINISH
 DO NOT SCALE DRAWING

Water Safety Products, Inc. | 1.800.987.7238 x 116
 TITLE:
12'X12' I-BEAM
 SIZE DWG. NO. REV
B
 SCALE: 1:16 WEIGHT: SHEET 1 OF 1



Hours of Operation:

M-F 8:30am to 5:30pm Eastern Time

Office: (800) 987-7238, ext. 4

International: (321) 777-7051

Fax: (321) 777-5438

Phone System Extensions:

Rick Soper: ext. 112

Barbara Marshall: ext. 113

Marah Rodriguez: ext. 114 (Se Habla Español)

Debi Willman: ext. 115

Paula Panton: ext. 116

Kyle Stith: ext. 117

Mailing Address:

Water Safety Products, Inc.

PO Box 510861

Melbourne Beach FL 32951-0861

Physical Address:

Water Safety Products, Inc.

128 Tomahawk Dr

Indian Harbour Beach FL 32937

Water Safety Products would like to offer our thanks to all of our customers for your support and continued business over the past 21 years. We are an ecologically responsible company moving toward a carbon neutral future. We are developing innovative industry products that are environmentally conscious and treat our earth with respect. We encourage all of you to strive for the same high level of environmental care.

www.WaterSafety.com